

Livingston Gas Parish

ABOUT LIVINGSTON PARISH GAS

Livingston Parish Gas is located in Central Livingston Parish & extends into St. Helena & Tangipahoa Parish. Livingston Parish Gas has 900 customers, has 3 full time employees and 1 part time employee.

WHAT DOES LIVINGSTON PARISH GAS DO IF A LEAK OCCURS?

If a gas leak would occur Livingston Parish Gas would dispatch trained personnel to respond to the leak. Once on scene of leak, if emergency responders were needed we would notify them for assistance. LPG will also take steps to minimize the loss of natural gas and the outage of customers.

MAINTAINING SAFETY AND INTEGRITY OF PIPELINES

Livingston Parish Gas is on call 24 hrs. 7 days a week. Our field personnel continually observes and monitors our Gas Distribution system on a daily basis. If anything is noticed they will notify the proper field personnel.



EMERGENCY CONTACT: 1-225-667-8273

PRODUCTS/DOT GUIDEBOOK ID#/GUIDE#:
Natural Gas 1971 115

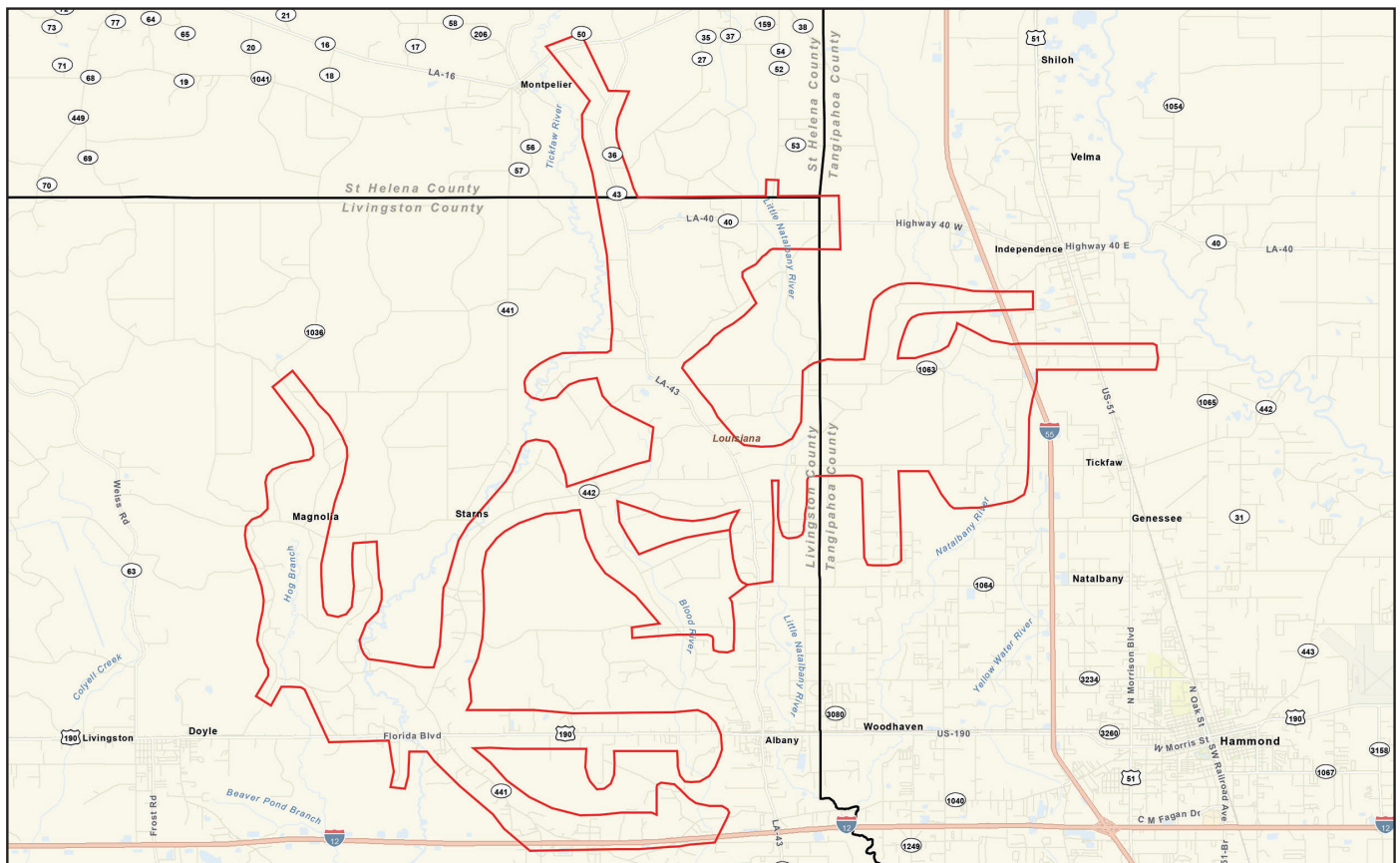
LOUISIANA PARISHES OF OPERATION:

Livingston Tangipahoa
St. Helena

Changes may occur. Contact the operator to discuss their pipeline systems and areas of operation.

HOW TO GET ADDITIONAL INFORMATION

For additional information about Livingston Parish Gas contact us at directly.



Gas pipe is from ~ to 3/4" to 4" range from 15# - 60# on the Gas Distribution System.